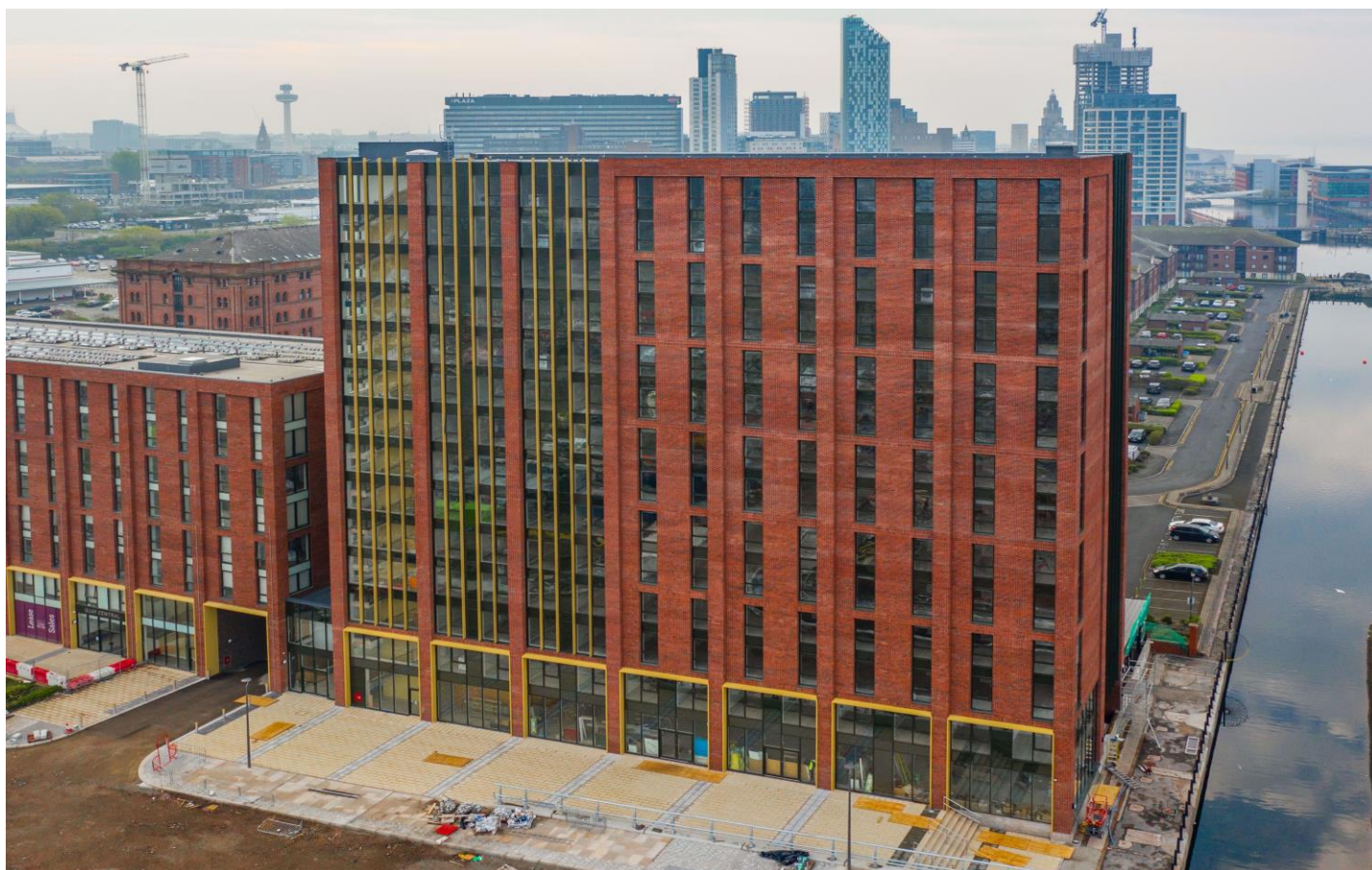




# **ASPIRE** RESIDENTIAL



**Apartment 910, Park Central 11 Jesse Hartley Way**  
L3 0AZ

**£750pcm**

**Brand New Development**

**One Double Bedroom**

**Bathroom**

**Free Wi-Fi**

**Unfurnished**

**New Fitted Kitchen with  
Appliances**

**EPC Rating C**

Aspire Residential is delighted to offer an unfurnished apartment within the Park Central new development. The high-specification new-build situated in Liverpool Waters comprises one bedroom, with premium quality interior, high-specification bathroom, fully equipped kitchen and free Wi-Fi. The apartment is available now.

Aspire Residential, 28 Goring Road , Worthing, BN12 4AD  
Phone: 01903 259961, Email: [info@aspireresidential.co.uk](mailto:info@aspireresidential.co.uk)  
[www.aspireresidential.co.uk](http://www.aspireresidential.co.uk)



### Park Central Highlights

Premium New Build located in Liverpool Waters.  
High-Specifications Free Wi-Fi Unfurnished or  
Furnished Rental price varies depending furnished  
or unfurnished

### Nearby Walking Distances

Nearest City bound bus stop - 6 minutes' walk  
Moorfields Station - 16 minutes' walk Liverpool  
James St Station - 19 minutes' walk Liverpool City  
Centre - 19 minutes' walk

### Disclaimer

In accordance with the Estate Agency Act 1979, we  
wish to notify you that the landlord of this property is  
an associate of Aspire Residential.

Energy Efficiency Rating		Current	Potential
Very energy efficient - lower running costs			
(92-100) A			
(81-91) B			
(69-80) C		79	79
(55-68) D			
(39-54) E			
(21-38) F			
(1-20) G			
Not energy efficient - higher running costs			
England & Wales		EU Directive 2002/91/EC	

Environmental (CO <sub>2</sub> ) Impact Rating		Current	Potential
Very environmentally friendly - lower CO <sub>2</sub> emissions			
(92-100) A			
(81-91) B		83	83
(69-80) C			
(55-68) D			
(39-54) E			
(21-38) F			
(1-20) G			
Not environmentally friendly - higher CO <sub>2</sub> emissions			
England & Wales		EU Directive 2002/91/EC	



These details are for guidance only and complete accuracy cannot be guaranteed. If there is at any point, which is of particular importance, verification should be obtained. They do not constitute a contract or part of a contract. All measurements are approximate. No guarantee can be given with regard to planning permissions or fitness for purpose. No apparatus, equipment, fixture or fitting has been tested. Items shown in photographs are NOT necessarily included. Interested Parties are advised to check availability and make an appointment to view before travelling to see a property.